



PRODUCT OVERVIEW

RAL COLOURS –
Innovation and reliability. Worldwide.

RAL CLASSIC

THE WORLD'S LEADING INDUSTRIAL COLOUR COLLECTION

The RAL CLASSIC colour collection has for 90 years been indispensable in the clear communication of colours and a guarantee for obtaining exactly the same colours – worldwide.

APPLICATION EXAMPLES

Steel sculpture by world famous sculptor Anish Kapoor and star architect Cecil Balmond is London's Olympic landmark. The ArcelorMittal Orbit glows in RAL 3003 Ruby Red.



Allmiljö – a leading premium brand manufacturer of high-quality kitchen furnishings – produces these kitchen models in RAL 1023 traffic yellow.



A design classic that is available in various colours. The picture shows a model in RAL 1004 Golden yellow.



Emergency exit signs have the colour RAL 6002 Leaf green.



Thonet produces the S 43 cantilever chair by Mart Stam in 11 RAL colours.



RAL 840-HR

Primary standards with
213 RAL CLASSIC colours

- ✓ Semi matt
- ✓ A5-sized 14.8 x 21.0 cm
- ✓ Colour illustration
A6-sized 10.5 x 14.8 cm
- ✓ Binding colour samples
for colour matching
and quality control
- ✓ Including XYZ-values, colour
distance from the original
standard and reflectance curve
- ✓ Single cards available



RAL 841-GL

Primary standards with
196 RAL CLASSIC colours

- ✓ High gloss
- ✓ A5-sized 14.8 x 21.0 cm
- ✓ Colour illustration
A6-sized 10.5 x 14.8 cm
- ✓ Binding colour samples
for colour matching
and quality control
- ✓ Including XYZ-values, colour
distance from the original
standard and reflectance curve
- ✓ Single cards available

RAL K1

Booklet with
213 RAL CLASSIC colours

- ☑ Booklet size 10.5 x 20.0 cm
- ☑ Colour illustration 5.2 x 1.5 cm
- ☑ 7 colours per page
14 colours at a glance
- ☑ Gloss



RAL K1 INDIVIDUAL

Personalised company imprint

For further information:

- ☑ ral-individual@ral-ggmbh.com





RAL K5

Colour fan deck with
213 RAL CLASSIC colours

- ❑ U-shaped protective cover
- ❑ Full-page colour illustration
5.0 x 15.0 cm
- ❑ Well-suited for colour combinations
and colour comparisons
- ❑ Semi matt or gloss



RAL K5 INDIVIDUAL

Personalised company imprint

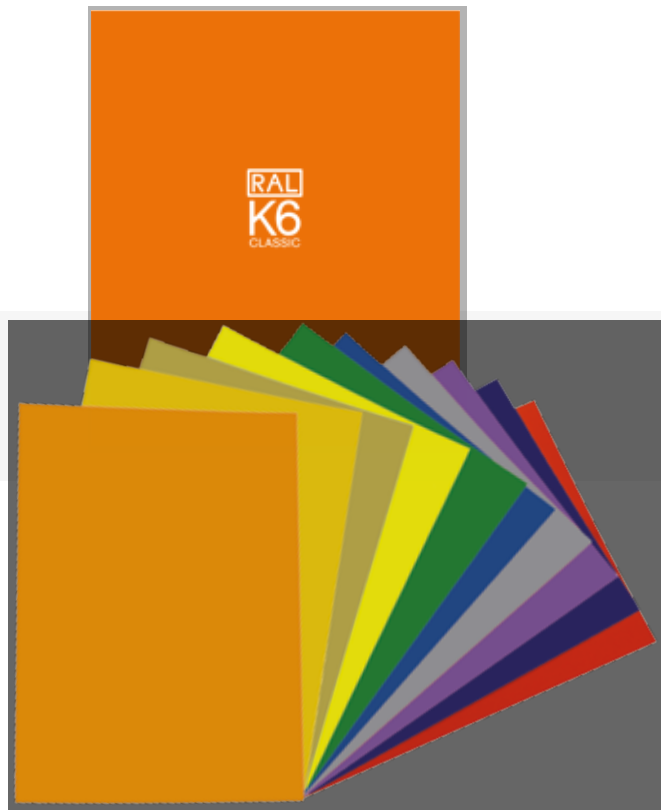
For further information:

- ❑ ral-individual@ral-ggmbh.com

RAL K6

Ring binder with all
213 RAL CLASSIC colours

- A4-sized 21.0 x 29.7 cm
- Semi matt
- All 213 RAL CLASSIC colours
available as single sheets



RAL K7

Colour fan deck with
213 RAL CLASSIC colours

- Fan deck size 5.0 x 15.0 cm
- Colour illustration 2.0 x 5.0 cm
- Five colours per page
- Gloss





RAL F9

Collection of Bundeswehr camouflage colours

- ❑ A5-sized (14.8 x 21.0 cm), colour illustration A6-sized (10.5 x 14.8 cm)
- ❑ Colour samples for colour matching and quality control
- ❑ With production and tolerance information from the Bundeswehr

RAL F9 | RAL K7 INDIVIDUAL

RAL K7 INDIVIDUAL

Personalised company imprint

For further information:

- ❑ ral-individual@ral-ggmbh.com



RAL DESIGN SYSTEM

THE CIE_{Lab}-BASED COLOUR SYSTEM

The RAL DESIGN SYSTEM provides 1,625 colours arranged according to hue (H), lightness (L) and chroma (C).

BK Keramik – Central Saint Giles is the urban highlight in London's West End. For the facade designed by Renzo Piano, 140,000 ceramic elements were processed in six different colours: RAL 070 70 80, RAL 050 50 70, RAL 050 50 78, RAL 000 75 00, RAL 110 60 50 und RAL 7035 Light Grey.



APPLICATION EXAMPLES



The company LEICHT Küchen AG uses the colours from the RAL DESIGN SYSTEM. The colour Curcuma is RAL 070 60 60.



The striking architecture of the hotel lounge is as calming as it is stimulating. For harmonious, provocative and surprising colour effects as required, RAL has the ideal colour solution: RAL DESIGN SYSTEM provides 1,625 colours and one million options.



RAL D2

Colour fan deck with 1,625 RAL DESIGN SYSTEM colours in protective box

- ❑ Fan deck format 5.0 x 29.0 cm
- ❑ Colour display 5.0 x 2.5 cm
- ❑ Semi matt



RAL D2 INDIVIDUAL

Personalised company imprint

For further information:

- ❑ ral-individual@ral-ggmbh.com

RAL D4

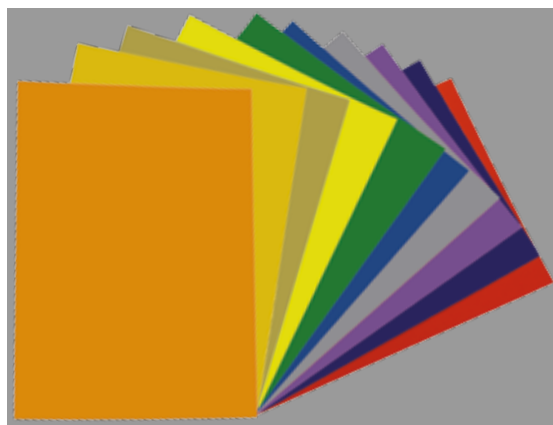
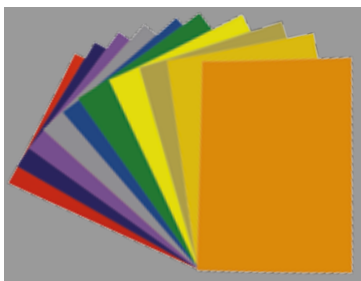
The Colour Atlas with 1,625 RAL DESIGN SYSTEM colours presents the various colour gradients within a colour tone from light to dark, as well as their increasing colour intensity.

- ☑ Atlas size 31.5 x 28.0 cm
- ☑ Colour size 1.7 x 1.7 cm
- ☑ Semi matt



RAL DESIGN SYSTEM SINGLE SHEET

Colour samples of RAL DESIGN SYSTEM colours



DIN A6

- ☑ A6-sized 10.5 x 14.8 cm*
- ☑ Semi matt

DIN A4

- ☑ A4-sized 21.0 x 29.7 cm*
- ☑ Semi matt
- ☑ Available as complete set in ring binders

*The 89 dark shades which are no longer included in the revised RAL DESIGN SYSTEM are available as A4- and A6-sized single sheets.

NEW



RAL D6

Box with 1,625 individual sheets

- ✓ Box format 49.0 x 26.0 x 17.5 cm
- ✓ RAL DESIGN SYSTEM colours
- ✓ Clearly arranged according to the CIE Lab colour circle
- ✓ Format DIN A6 (10.5 x 14.8 cm)

RAL D6 | RAL D8



RAL D8

Box with 8 colour fan decks

- ✓ Box format 28.0 x 11.5 x 6.5 cm
- ✓ CIE Lab colour circle on the inside cover
- ✓ 1,625 colours
- ✓ Fan deck format 10.0 x 3.3 x 5.0 cm
- ✓ Clearly arranged system
- ✓ Semi matt

RAL EFFECT

THE INNOVATIVE EFFECT COLOURS

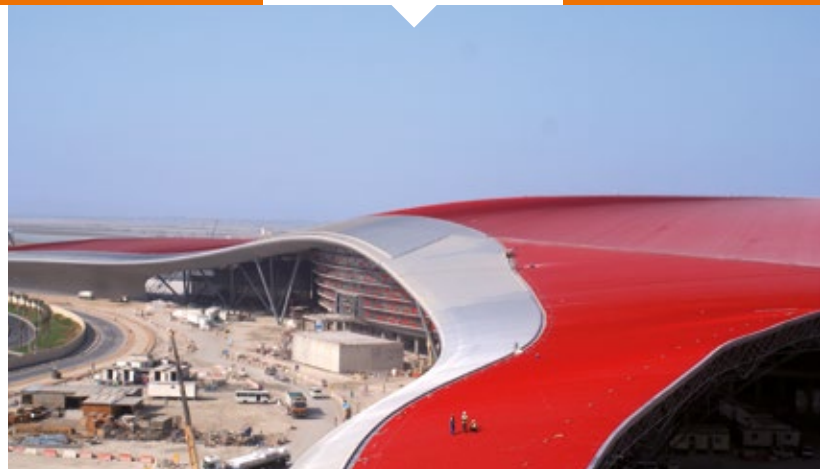
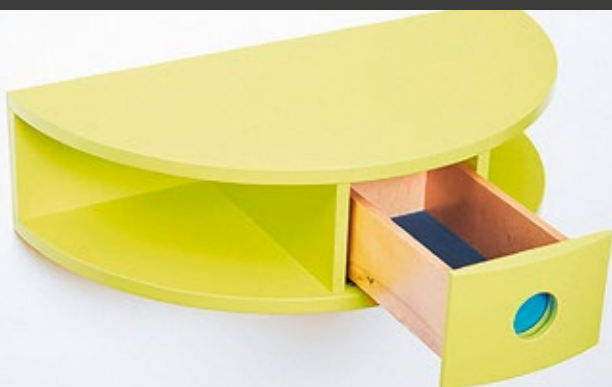
As a particular highlight, the RAL EFFECT collection contains 70 metallic colours that harmonise with the remaining 420 solid colours.

APPLICATION EXAMPLES

Miele – The geometry of the designer range hoods in the DA 7000 line is orientated on the ellipse. As a purpose-built variant, the top and bottom surfaces can be powder-coated in many RAL colours.



Roundboard is a small storage hotspot. For the coating of this piece of furniture, only RAL colours are applied, for example the RAL EFFECT colour shades RAL 120-2 (PAPER), RAL 690-1 (AZURE) and RAL 690-5 (PETROL).



Ferrari World Abu Dhabi – One of the largest metal roofs in the world was coated in RAL 9006.



Müller Möbelfabrikanten Mobile Line – Handcrafted designer furniture made of metal, available in many RAL colours.

RAL E1

Primary standards of all 490
RAL EFFECT colours in a protective case

- ☑ Box format 49.0 x 26.0 x 17.5 cm
- ☑ 420 solid colours and 70 metallic colours
- ☑ Based on waterborne paint system
- ☑ A6-sized 10.5 x 14.8 cm
- ☑ Colour illustration 10.5 x 13.8 cm
- ☑ Binding colour samples for colour matching and quality control
- ☑ Solid colours semi matt
- ☑ Metallic colours high gloss

RAL E1



RAL E3

Colour fan deck with
490 RAL EFFECT colours

- ❑ 420 solid colours and 70 metallic colours
- ❑ Each page displays the metallic colour that harmonises with the six solid colours
- ❑ Solid colours based on waterborne paint systems, metallic colours based on acrylic paint systems
- ❑ Colour fan deck format 5.0 x 21.0 cm
- ❑ Solid colours 5.0 x 2.0 cm, metallic colours 5.0 x 3.8 cm
- ❑ Solid colours semi matt
- ❑ Metallic colours 5.0 x 3.8 cm
- ❑ Also available with personalised company print



RAL E4

Colour fan deck with
70 RAL EFFECT colours

- ❑ Colour displayed across full surface 5.0 x 13.0 cm
- ❑ High gloss
- ❑ Also available with personalised company print



RAL PLASTICS

THE COLOUR STANDARD FOR PLASTICS

Multi-functional polypropylene plates simplify the reproduction of RAL colours for plastics. An independent RAL colour standard for plastics is now available for the first time with RAL PLASTICS. This material is an ideal partner even for innovative building architecture in the 21st century.

Three different surface textures – high gloss polished, VDI 24 and VDI 42 – show users the colour dependent on surface roughness.



RAL PLASTICS offers an individual RAL colour standard for plastics.



Material: polypropylene

RAL P1

The 100 most popular RAL CLASSIC colours as polypropylene colour plates in a protective case



- ❑ Binding colour sample for plastics in RAL CLASSIC colours
- ❑ Format 10.5 x 14.8 x 0.3 cm
- ❑ Three levels of thickness: 0.3 cm, 0.2 cm and 0.1 cm
- ❑ Three different surface textures – high gloss polished, VDI 24 and VDI 42
- ❑ Includes absolute values and colour distance from original plastic sample
- ❑ With reflectance curve
- ❑ Protective sleeve for each plastic plate

RAL P2

200 RAL DESIGN SYSTEM polypropylene colour plates in two protective cases for innovative product and building design

- ❑ Binding colour sample for plastics in RAL DESIGN SYSTEM
- ❑ 160 opaque plates
- ❑ 40 transparent plates
- ❑ Three levels of thickness: 0.3 cm, 0.2 cm and 0.1 cm
- ❑ Three different surface textures – high gloss polished, VDI 24 and VDI 42
- ❑ Includes absolute values and colour distance from original plastic sample
- ❑ With reflectance curve
- ❑ Protective sleeve for each plastic plate



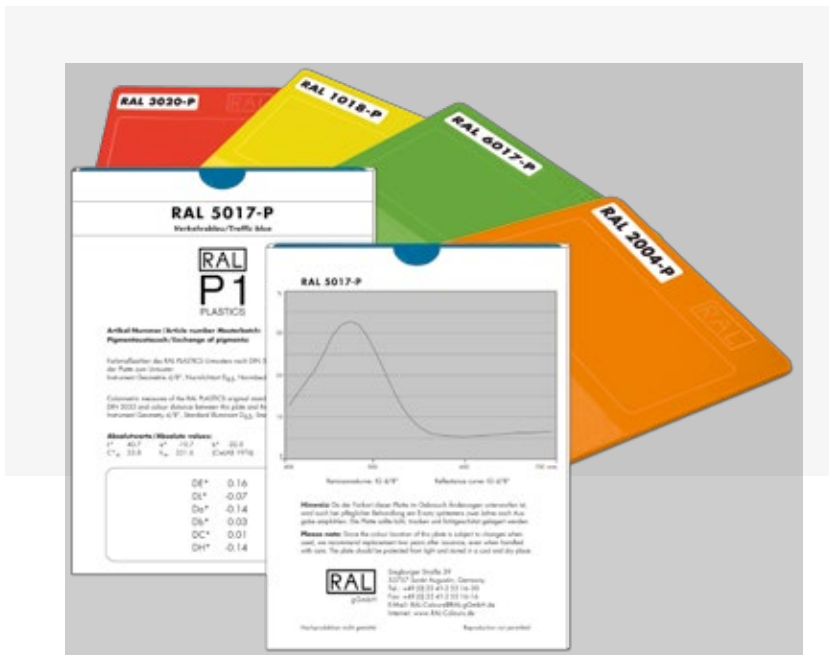


RAL P1 + P2 SET

All 300 RAL PLASTICS colours
in three protective cases

RAL P1 + P2 SINGLE PLATES

300 RAL PLASTICS colours



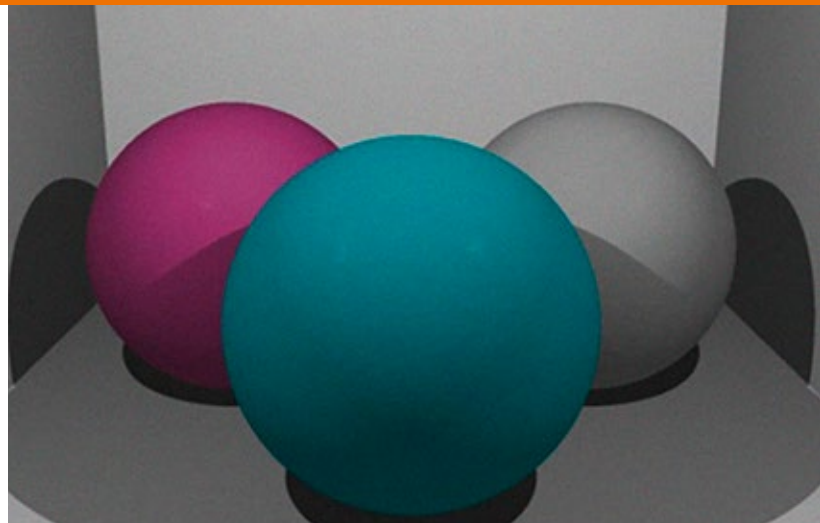
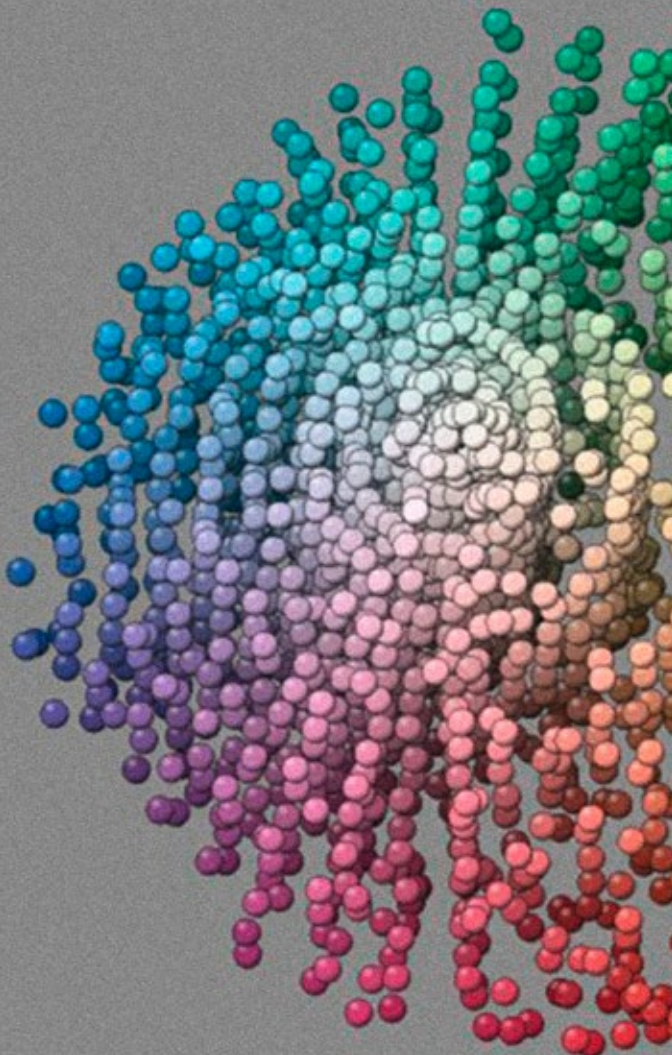
- ✓ Binding colour sample for plastics in RAL DESIGN SYSTEM colours
- ✓ Format 10.5 x 14.8 x 0.3 cm
- ✓ Three levels of thickness: 0.3 cm, 0.2 cm and 0.1 cm
- ✓ Three different surface textures – high gloss polished, VDI 24 and VDI 42
- ✓ Includes absolute values and colour distance from original plastic sample
- ✓ With reflectance curve
- ✓ Protective sleeve for each plastic plate

RAL DIGITAL

THE RAL COLOURS FOR THE COMPUTER

RAL DIGITAL products also open up the digital world of colour. The RAL DIGITAL 5.0 software contains all 2,328 RAL colours and allows you to navigate through the entire colour spectrum. All RAL colours can be exported and integrated into many well-known graphics and CAD programmes.

The 3D colour space shows different colour palettes.



RAL DIGITAL 5.0 enables you to try out colours on images and 3D objects under different lighting conditions, as well as to colour your own images.

RAL E1 EFFECT	60,7254	-11,5464	34,0495	142	152
RAL E1 EFFECT	51,6549	-9,20632	32,2807	122	127
RAL E1 EFFECT	43,5657	-14,7751	25,3688	89	109
RAL E1 EFFECT	42,6982	-21,761	27,4859	74	110
RAL E1 EFFECT	46,0118	-16,6672	29,8187	93	116
RAL E1 EFFECT	90,624	-6,93984	32,9131	233	231
RAL E1 EFFECT	87,2065	-10,341	54,6095	225	223
RAL E1 EFFECT	72,756	-13,0308	75,1055	183	184

The RAL DIGITAL 5.0 software contains all 2,328 RAL colours.



Software for designers, architects, interior designers and anyone else who works creatively and professionally with colour. **RAL DIGITAL** enables

- Navigation through the entire colour spectrum and the **RAL** colour space scale
- The perfect colour tone and harmonious colour combinations to be identified based on many different criteria and specifications
- The innovative depiction of colours in a movable 3D colour space
- The editing of image files: Your own images can be coloured, while colours from images can be analysed and recorded
- An image or colour to be viewed in different types of lighting thanks to the new, innovative light box

RAL DIGITAL

VERSION 5.0

Software with all 2,328 RAL colours for **Win** or **Mac**

- ☑ Contains RGB, HEX, CMYK, LAB, HLC and lightness values for all RAL colours
- ☑ Shows inspirational colour harmony recommendations based on monochromatic, adjacent, analogous and complimentary combinations
- ☑ Colour search: Find RAL colours based on matches to current commonly used collections or compared to colorimetric values
- ☑ Generate and store or export your own colour data for integration into many design and CAD programs, or simple text format for document or spreadsheet analysis

RAL colour palettes can be imported from the following programmes amongst others:

- ☑ AutoCAD Colour Book (*.acb)
- ☑ Chromalyzer v1.x (*.txt)
- ☑ Corel (*.cpl)
- ☑ Excel (*.csv)
- ☑ Illustrator (*.ase)
- ☑ Palette Image (*.png)
- ☑ Jpeg Format (*.jpg)
- ☑ Photoshop (*.aco)
- ☑ Windows Bitmap (*.bmp)
- ☑ Vector Works [RGB] (*.xml)
- ☑ Quark XPress (*.qcl)
- ☑ Nemetscheck (*.pal)

You can find a complete list on www.ral-colours.com

RAL COLORCATCH NANO

Colorimeter

- ▣ Features an integrated calibration system
- ▣ Magnifies an image six times and measures the colour from just a few pixels
- ▣ Shadows or dirt are eliminated during measurement
- ▣ Indicates RGB, LAB and CMYK as well as the reflectance values of most selected colour cards
- ▣ Additional colour collections can be purchased from within the app
- ▣ Contains all 2,328 RAL colours

***RAL COLORCATCH NANO works together with**

- ▣ RAL iCOLOURS
- ▣ Download Apple Store (EUR 8,99)
- ▣ Download Google Play (EUR 9,99)



reddot design award
winner 2017



The colorimeter **RAL COLORCATCH NANO** measures up to five colours at the same time, regardless of surface and material, and finds the corresponding **RAL** colour shade. The shade is shown with digital colour values and - using the app **RAL iCOLOURS*** - applied to an object directly and sent via e-Mail. During the colour measurement all non-dominating colour shades, shadows or dirt are eliminated automatically.



RAL iCOLOURS

The app with all RAL colours for iOS and Android devices

- ✔ Contains all 2,328 RAL colours
- ✔ As well as the corresponding LAB, sRGB, CMYK and LRV values

Should the building facade be Lemon Yellow or Sun Yellow? Strawberry Red in the bedroom – **RAL iCOLOURS** will show you! With the **RAL** app for Apple and Android devices, you can quickly and easily colour your photos in any **RAL COLOUR**.

See everything in a new colour with **RAL iCOLOURS** in three simple steps:

- Photograph an object
- Select the colour range **RAL CLASSIC**, **RAL DESIGN SYSTEM** or **RAL EFFECT**
- Transfer the selected colour shades into the photo

RAL ACADEMY

TRAINING AND DEVELOPMENT ON A VERY HIGH LEVEL

The seminars at the RAL ACADEMY on the subject of colour and colour design are aimed at all occupational groups from the areas of architecture, design and trade who want to expand their knowledge of colour and be perceived by their customers as experts in this field.

Colour psychology and colour physiology.



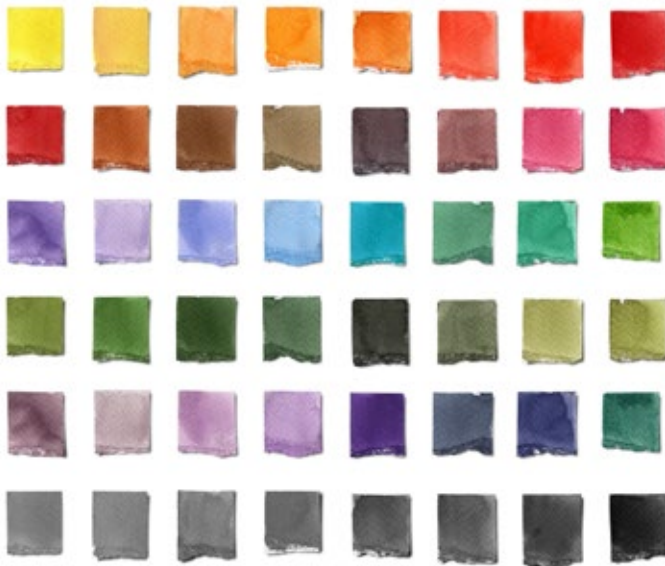
Colour strategies and application.

Well-being & design: how colours work and why.



Colour trends and ambiance: trend marketing

RAL ACADEMY



- ▼ Training and development for colour designers
- ▼ Workshops & seminars as well as shop and atelier talks
- ▼ Getting to know and using RAL products
- ▼ Insights into colour design, theory & practical exercises
- ▼ Top-class speakers and course instructors

Specialists in colour design always keep their expertise up to date. **RAL COLOURS** is supporting them in this and connects modern scientific knowledge to long term experience in training and development of colour designers at a very high level.

Through the close partnership with the Bergische Universität Wuppertal, Germany and the "Haus der Farbe" in Zürich, Switzerland, professional colour users receive the latest knowledge and benefit from decades of practical experience in theoretical and practical training about topics such as colour and light.

The offer ranges from one day workshops and seminars to two day workshops and shop and atelier talks. Participants not only get to know and learn to use the diverse world of **RAL** products, but also gain profound insights into the world of colour design and connections between light and colour.

With the **RAL ACADEMY** events, the colour and design expertise of the participants will benefit. At the same time the academy will establish connections between different professional groups dealing with the topics colour and colour design.

Further information about the topic of training and development at **RAL COLOURS** can be found at www.ral-akademie.de

RAL BOOKS

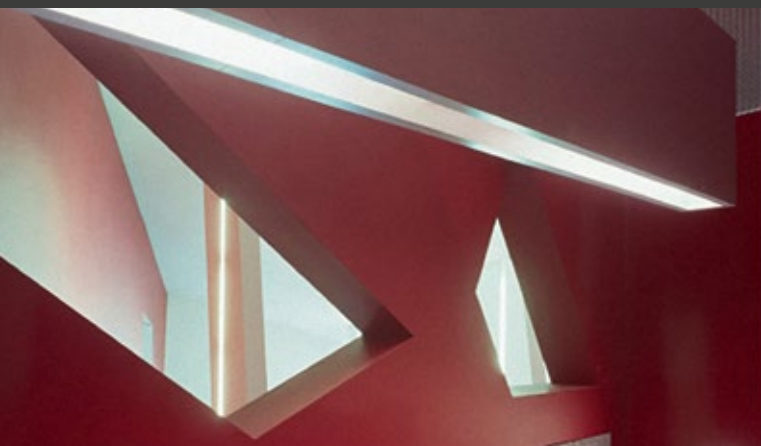
INSPIRATION AND STIMULATION FOR COLOUR DESIGN

RAL BOOKS offer a selection of indispensable planning tools for design, inspiration, insights and trends in colour. All colour design books are published in two languages – in German/English and sometimes additionally in Chinese/English.

RAL BOOKS provide inspiration and stimulation to architects, interior decorators, designers and creative people.



Numerous practical examples demonstrate the use of colour in spatial design.



Highly expressive collages illustrate the colour effects.

COLOUR MASTER

The inspiring, interactive design book with endless possibilities for creative people

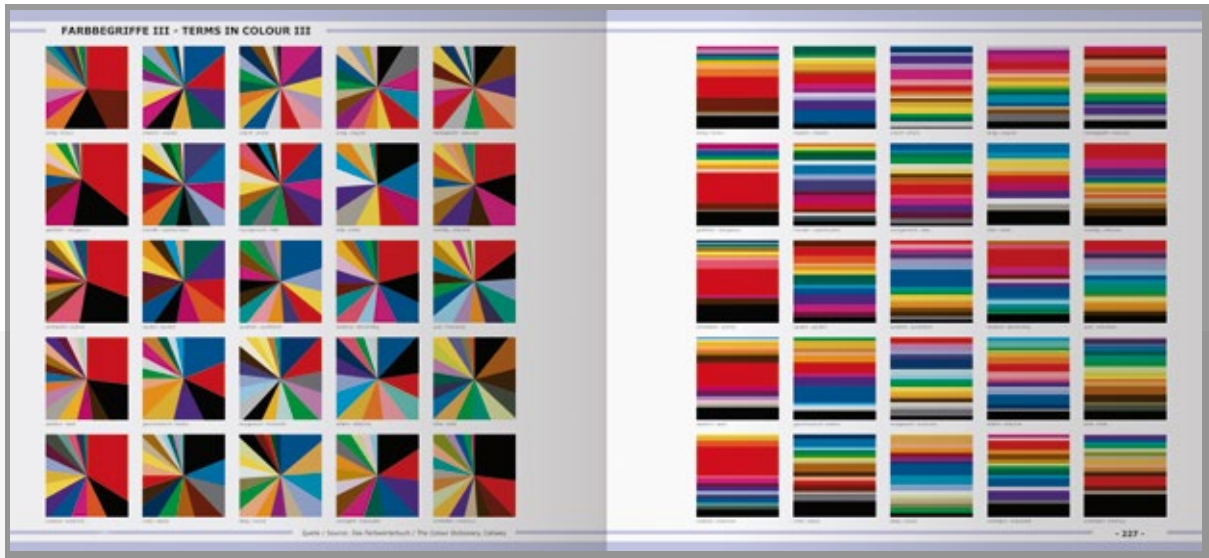
Book with RAL EFFECT E3 fan deck

- 328 pages of colourfulness in shapes, patterns and pictures
- 12 colour templates
- Encoded in RAL EFFECT colours
- Format: 32.6 x 29.6 cm, hardcover
- Bilingual: German/English
- Every single page of the book represents an individual experimenting field for endless possibilities

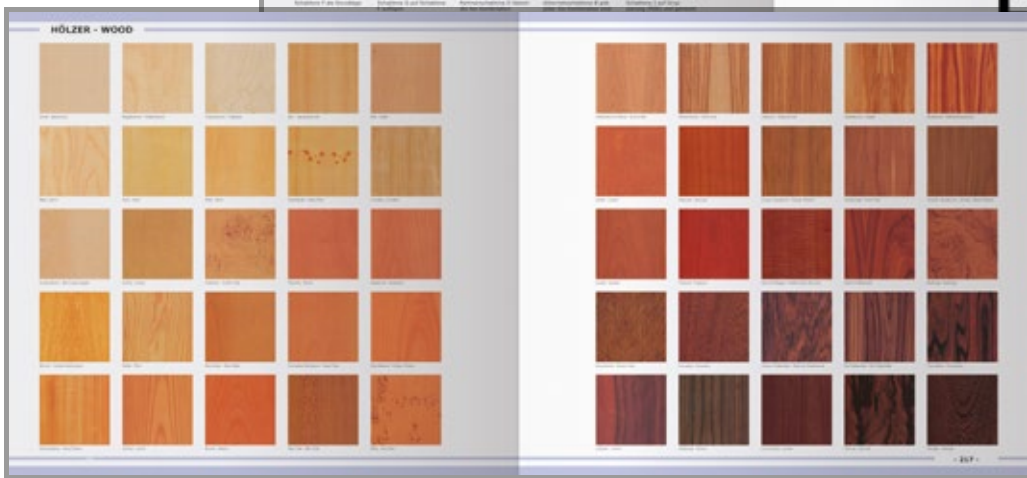
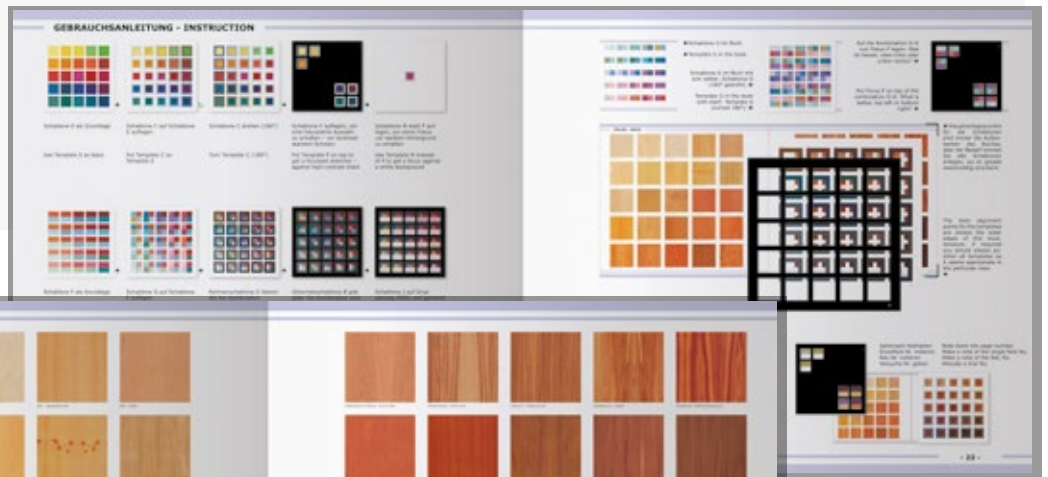


On 328 pages, the book provides inspiration with different shapes and patterns for designers, architects, artists and other creative people. It is an experimenting tool, filled with endless design opportunities. **COLOUR MASTER** provides colour and material images in front of graphical, scenic and art historical backgrounds

At the same time it shows colours and shapes of the past and the future, such as the newest wallpaper art collections from contemporary designers, historical ornaments and decors, colours from fashion, sports, electronics, technics, music, but also colours of health and care, fabrics, woods, stones and surface products from interior construction and from surface design also for the luxurious sector.



COLOUR MASTER



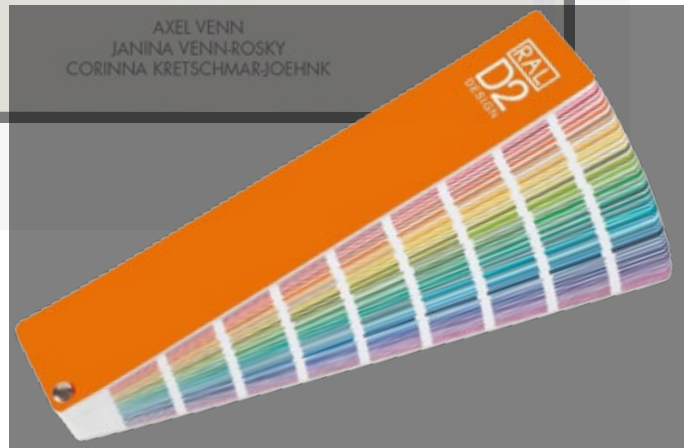
COLOURS FOR HOTELS

The planning manual for designers in the hotel sector

- ▣ Adjectives with hotel reference, expressed in colour combinations
- ▣ Coded in the RAL DESIGN SYSTEMS
- ▣ 416 pages
- ▣ Format: 24 x 26 cm, hardcover
- ▣ Bilingual: German and English
- ▣ With practically relevant design examples in hotels
- ▣ Template for colour combinations



German Design Award
WINNER 2015



Hotels want to be places of comfort and relaxation for their guests. Sincere hospitality and first class service are a part of this. An appealing hotel ambience in the right professional colour combination provides a warm welcome and a comforting atmosphere. For these purposes, **RAL** has become the publisher of the book **COLOURS FOR HOTELS**. The team of authors Corinna Kretschmar-Joehnk, interior designer (Jol Design), and Axel Venn, colour scientist, have written this unique and scientifically funded reference book for colour design and valuable hotel ambience. The colours from the **RAL DESIGN SYSTEM** serve as a creative basis.

LUXURIÖS LUXURIOUS

Die lobby von schwarzen Marmorbänken umgeben. Hier hat Platz sein, zwar sich für einen Moment in eine Welt zurück, die ein Gefühl von Würde und Bedeutung erzeugt. Die Wandgestaltung ist unheimlich schön, aber eben auch. Gediegene Manufakturarbeit mit einer reduzierten Strukturfläche unterstreicht eine bewusste, distanzierte Haltung des Menschen zum Produkt.

Jedes Kubik besitzt seine eigenen Aspekte, wie auch jeder formale Inhalt. Schwarzgrüngrün leuchtet überbringen eine Behelf, die äußerlich neutral zu sein scheint, in Wirklichkeit jedoch eine gewinnbringende und gleichzeitig persönliche Seite haben kann. An irgendeiner Stelle muss die Farbe für einwirken, auch wenn es nur die Präzisierung einer Sauffarbe oder eine Leinwand einführung beruht. Die richtigen Farben, die zum besten passen, sind Gelb und Gold und Silber.

Zum Licht ist häufig umgeben. Eine gewisse Konzentration auf wenige Bereiche ist gewissermaßen notwendig, um nicht für den Betrachter, sondern auch den Farben und Materialien im Raum. Nicht ohne Grund sind Bars so gern beleuchtet. Hier wird der beleuchtete, schattige Stuhl zum schattigen, dunklen Hintergrund und die freundliche Dose von reflektiert zur Fensterrand.

Mein kann tatsächlich nur haben. So finden wir dort jenen Raum, der uns die Freiheit gibt, als und zu den schünen Traum von Aufregung und Glück zu verwandeln. Denn eine Menge nicht nur ein Raum ist ein Raum zu haben, gehört zur schünen Welt des Überflusses.






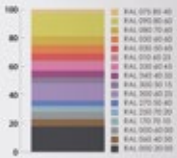



COLOURS FOR HOTELS

<p>LUXURIÖS LUXURIOUS</p> 	<p>REPRÄSENTATIV PRESTIGIOUS</p> 	<p>LUXURIÖS REPRÄSENTATIV HOCHWERTIG EXKLUSIV</p>	<p>LUXURIOUS PRESTIGIOUS HIGH-END EXCLUSIVE</p>
--	---	--	--

Die Vielfalt auf Luxus kann ebenso schmerzlich sein wie ein Übermaß an Pink, Pink, Pink, Purple, Polster, Polster, Polster und Plush. Beim intensiven Betrachten der verschiedenen Bildungen der Farbe fällt auf, dass die dunklen Töne zusammen mit den hellen, warmen Farben eine gleichzeitige Gemeinschaft von Harmonie und Kontrast bilden. Scharfe Linien und harte Strukturen werden durch Plush, Eleganz und leuchtende Farben, verbunden mit der Kombination aus natürlichen Schwarzgrüngrün, smaragdgrünen Purpur und Saffian sowie königlichen Blau und Edelsteinen zusammengefasst.

Hinter allen Farben verbirgt sich jedoch ein unerbittlicher Macht und Willkür. Betrachtet die Gäste jeden Purpur, die Repräsentative übergrüne und blauen Gold, die weiß die Gäste, weil die Gäste es nur einen

<p>LUXURIÖS</p> <p>Luxus ist nicht notwendig. Gerade seine fehlende Abhängigkeit von materiellen Werten macht ihn so begehrt. Die große Schamlosigkeit, mit der ein reiches Volk sein Geld ausgeben kann.</p>  <p>So selten häufig die Kultur speziell teuer. Sündhafter als ein Mann, der ein Stück Gold und ein Stück Silber, das die Signale von Reichtum oder wiederholter Souveränität.</p>  <p>Die Zeichnung ist nicht so notwendig wie die Farben. Die pure Größe ist ein schillerndes Zeichen, was nur bis weit reichen sie.</p> 	<p>LUXURIOUS</p> <p>Luxury is not necessary. It is non-essential, often to feel more status or position, unless it is desirable. The large black market is in a subtle statement of its power.</p> <p>This is what color speaks: a signal of unapologetic exposure, all across after look like. One wants here as a highly used as a conspicuous, reflecting signal of wealthy, organized or successful authority.</p> <p>The drawing is not as necessary as the colors. A few bright lines and simple lines, shapes, lines, round to angular suffice.</p>	<p>LUXURIÖS</p>  <p>Gold, Schwarz, Violett und Pink sind hier - aber ist pure Luxus. Luxus ist ein Glaube und nicht unbedingt von materiellen Dingen. Luxus ist ein Zeichen, was nur bis weit reichen sie.</p> <p>Gold, black, violet and pink are here - but is pure luxury. Luxury depends on glamour and not necessarily on tangible splendour. Luxurious fashion items are not for pure gold but for and essential for golden looks and glimmering splendours.</p>	<p>LUXURIOUS</p> <p>gold, splendour, luxury of the golden with the bright colors. Luxurious, but not necessarily on tangible splendour. Luxurious fashion items are not for pure gold but for and essential for golden looks and glimmering splendours.</p>
---	---	---	--

We set standards.
Since 1925.



RAL QUALITY MARKS A reliable choice

RAL QUALITY MARKS (RAL GÜTEZEICHEN) signal the particularly high level of quality of products and services to consumers. At the same time, they stand for clearly defined values: Companies that use RAL QUALITY MARKS (RAL GÜTEZEICHEN) promise fair, honest and exemplary behaviour. They assume responsibility for their products and services and are thus reliable partners for consumers.



RAL COLOURS The language of the world of colour since 1927

RAL COLOURS are the world's leading colour standard for all professional users of colour in industry, trade, architecture and design. The 2328 colour tones deliver the highest level of precision and a varied choice. RAL COLOURS are marketed via our own sales partners in over 40 countries.



RAL ENVIRONMENT The awarding body for the Blue Angel ecolabel for almost 40 years

Consumers require reliable information in order to act in an environmentally conscious manner. Ecolabels like the "Blue Angel" or the "EU Ecolabel" stand for environmentally friendly goods and services, which are only permitted to carry the environmental label once they have passed a strict testing process. The testing process and the awarding of the environmental labels have been carried out by RAL ENVIRONMENT since 1978.



RAL LOGO LICENCE Brand marketing and monitoring

RAL LOGO LICENCE guarantees the worth of the tests carried out by Stiftung Warentest by monitoring and licensing advertising that uses the test results. Consumer deception and false advertising are prevented and the tests remain objective and independent. In addition, RAL LOGO LICENCE is available to institutions and companies that want to independently market and/or monitor their brand.



RAL ACADEMY High quality communication of knowledge

At our seminars, workshops, presentations and talks, we pass on our specialist knowledge to interested parties and a variety of occupational groups. Further high quality training of colour designers is a key focus of the RAL ACADEMY.



This printed matter has been certified with the **BLUE ANGEL**.

IMAGE CREDITS

p. 06 © cruphoto/istockphoto.com, p. 06 © Arcelor Mittal,
p. 06 © allmilmö, Zeiler Möbelwerk GmbH & Co. KG, p. 06 © Thonet GmbH,
p. 06 © USM U. Schärer Söhne GmbH, p. 12 © NBK Keramik GmbH, p. 12 © aleksey kashin/Fotolia,
p. 12 © LEICHT Küchen AG, p. 16 © Miele, p. 16 © Ferrari S. p. A., p. 16 © müller möbelfabrikation,
p. 16 © GOCKEL H+M GbR, p. 20 © Mr_Mrs_Marcha/shutterstock.com, p. 28 © Safarbi.de/fotolia.com



Simply Excellent.

RAL gemeinnützige GmbH

Fränkische Straße 7
D - 53229 Bonn

T: +49 228 - 688 95 - 120
F: +49 228 - 688 95 - 420

ral-colours@ral.de
www.ral-colours.de

Edition april 2017

